



THE AGA KHAN UNIVERSITY

eCommons@AKU

Woman and Child Health

Division of Woman and Child Health

2-19-2019

Health care seeking for maternal and newborn illnesses in low- and middle-income countries: A systematic review of observational and qualitative studies

Zohra S. Lassi

University of Adelaide, Adelaide, South Australia, Australia

Philippa Middleton

University of Adelaide, Adelaide, South Australia, Australia

Zulfiqar Ahmed Bhutta

Aga Khan University, zulfiqar.bhutta@aku.edu

Caroline Crowther

University of Adelaide, Adelaide, South Australia, Australia

Follow this and additional works at: https://ecommons.aku.edu/pakistan_fhs_mc_women_childhealth_wc



Part of the [Maternal and Child Health Commons](#), [Pediatrics Commons](#), and the [Women's Health Commons](#)

Recommended Citation


Lassi, Z. S., Middleton, P., Bhutta, Z. A., Crowther, C. (2019). Health care seeking for maternal and newborn illnesses in low- and middle-income countries: A systematic review of observational and qualitative studies. *F1000Research*, 8, 200.

Available at: https://ecommons.aku.edu/pakistan_fhs_mc_women_childhealth_wc/107



SYSTEMATIC REVIEW

Health care seeking for maternal and newborn illnesses in low- and middle-income countries: a systematic review of observational and qualitative studies [version 1; peer review: 2 approved]

Zohra S. Lassi ¹, Philippa Middleton^{1,2}, Zulfiqar A. Bhutta^{3,4}, Caroline Crowther^{1,5}

¹Robinson Research Institute, The University of Adelaide, Adelaide, South Australia, Australia

²Healthy Mothers, Babies and Children, South Australian Health and Medical Research Institute, Adelaide, Australia

³Centre for Global Child Health, The Hospital for Sick Children, Toronto, Canada

⁴Center of Excellence for Women and Child Health, Aga Khan University, Karachi, Pakistan

⁵Liggins Institute, The University of Auckland, Auckland, New Zealand

v1 **First published:** 19 Feb 2019, 8:200 (<https://doi.org/10.12688/f1000research.17828.1>)
Latest published: 19 Feb 2019, 8:200 (<https://doi.org/10.12688/f1000research.17828.1>)

Abstract

Background: In low- and middle-income countries, a large number of maternal and newborn deaths occur due to delays in health care seeking. These delays occur at three levels i.e. delay in making decision to seek care, delay in access to care, and delay in receiving care. Factors that cause delays are therefore need to be understood to prevent and avoid these delays to improve health and survival of mothers and babies.

Methods: A systematic review of observational and qualitative studies to identify factors and barriers associated with delays in health care seeking.

Results: A total of 159 observational and qualitative studies met the inclusion criteria. The review of observational and qualitative studies identified social, cultural and health services factors that contribute to delays in health care seeking, and influence decisions to seek care. Timely recognition of danger signs, availability of finances to arrange for transport and affordability of health care cost, and accessibility to a health facility were some of these factors.

Conclusions: Effective dealing of factors that contribute to delays in health care seeking would lead to significant improvements in mortality, morbidity and care seeking outcomes, particularly in countries that share a major brunt of maternal and newborn morbidity and mortality.



Registration: PROSPERO [CRD42012003236](https://doi.org/10.1186/1745-6216-4201-2003236).

Keywords


Health care seeking, maternal health, neonatal health, developing countries, low- and middle-income countries

Open Peer Review

Referee Status:  

	Invited Referees	
	1	2
version 1 published 19 Feb 2019	 report	 report

1 **Aastha Kant**, Harvard Global Research Support Centre India (HGI), India

2 **Alfonso Rosales** , World Vision US, USA

Any reports and responses or comments on the article can be found at the end of the article.

Corresponding author: Zohra S. Lassi (zohra.lassi@adelaide.edu.au)

Author roles: **Lassi ZS:** Conceptualization, Formal Analysis, Funding Acquisition, Methodology, Resources, Software, Writing – Original Draft Preparation, Writing – Review & Editing; **Middleton P:** Methodology, Supervision, Writing – Original Draft Preparation; **Bhutta ZA:** Conceptualization, Investigation, Methodology, Supervision; **Crowther C:** Conceptualization, Methodology, Supervision, Visualization

Competing interests: No competing interests were disclosed.

Grant information: This review was part of a doctoral thesis that was funded by the University of Adelaide, Australia.
The funders had no role in study design, data collection and analysis, decision to publish, or preparation of the manuscript.

Copyright: © 2019 Lassi ZS *et al.* This is an open access article distributed under the terms of the [Creative Commons Attribution Licence](#), which permits unrestricted use, distribution, and reproduction in any medium, provided the original work is properly cited.

How to cite this article: Lassi ZS, Middleton P, Bhutta ZA and Crowther C. **Health care seeking for maternal and newborn illnesses in low- and middle-income countries: a systematic review of observational and qualitative studies [version 1; peer review: 2 approved]** F1000Research 2019, **8**:200 (<https://doi.org/10.12688/f1000research.17828.1>)

First published: 19 Feb 2019, **8**:200 (<https://doi.org/10.12688/f1000research.17828.1>)

Introduction

The majority of low- and middle-income countries (LMICs) have been unable to achieve the targets set for Millennium Development Goals (MDG) 4 and 5^{1,2}. Even with improvements in maternal and child mortality rates over past decades, 303,000 mothers and 5.9 million children under the age of 5 years died in 2015^{3,4}, with 99% of these deaths occurring in LMICs. LMICs lack financial and human resources and basic utilities including clean water, sanitation and education are not always readily available. Families in LMICs often unable to access and afford health care when required, and therefore, care seeking from non-skilled birth attendants is preferred when women give birth.

Rates of birthing at home are higher in LMICs, and usually skilled birth attendants (SBA) are not present⁵. In Sub-Saharan Africa, 50% of births occur at home with no skilled birth attendant; in South Asia, mothers and their families are the primary care givers of a third of all home births. In these regions, the inequalities are even higher among poorer people, particularly those living in very remote geographical areas⁶. While interventions to reduce poverty may require more time, training and deploying skilled birth attendants and upgrading emergency obstetric care are urgently needed⁷. Evidence suggests an association of skilled birth attendance with reduced neonatal mortality—77% of neonatal mortalities occur where coverage of skilled birth attendance is 50% or lower⁸.

While a systematic review that assessed the determinants of skilled attendance or health facility use for delivery in LMICs has been performed⁹, there was no attempt to identify the barriers and facilitators of health care seeking for maternal and newborn illnesses in LMICs. Another systematic review on effectiveness trials that has also identified strategies that can improve maternal and newborn health care seeking¹⁰; however, a review of narrative and qualitative studies is required to identify barriers and enablers of health care seeking in LMICs. We aimed to systematically review observational and qualitative studies to identify factors associated with delays that lead to serious maternal and neonatal morbidity and mortality¹¹. These delays occur at three levels: 1) identification and decision making to seek care; 2) arranging means to reach a health facility; 3) receiving adequate care at the health facility.

Methods

All observational and qualitative studies from LMICs that assessed health care seeking behaviour or pattern for maternal and newborn health care and illnesses were included. We define health care seeking as ‘sequence of remedial actions that individuals undertake to rectify perceived ill-health’. The primary aim was to identify the barriers and enablers of maternal and newborn health care seeking and related pathways in LMICs. The protocol for this systematic review and meta-analysis has been registered with PROSPERO 2012: [CRD42012003236](https://doi.org/10.1111/CRD4.2012003236).

Search strategy

The search engines PubMed, Medline, EMBASE, the Cochrane Library, and Google Scholar were initially searched up to Sep 16, 2016 and then searches were revised on September 27, 2017,

but we found that data was saturated, and no new themes were emerged. Search terms were a combination of [(‘care seeking’ OR ‘care-seeking’ OR ‘health care’ OR ‘health care seeking’ OR ‘community based intervention*’ OR ‘community-based intervention*’) AND (mother* OR maternal OR women OR newborn* OR neonat*)] used as medical subject headings and keyword terms in the title/abstract. No language restrictions were applied. Grey literature and reference lists of included studies were also searched to identify studies. We considered studies from LMICs that assessed the factors associated with health care seeking for maternal and newborn illnesses in observational or qualitative studies. We did not consider studies on health care seeking for specific maternal and newborn illnesses such as jaundice etc. or for preterm babies. We considered recommendations for systematic reviewing of qualitative studies¹². We used the PRISMA checklist PRISMA statement in reporting systematic reviews from the observational studies¹³. The 22-items STROBE checklist was used to assess the methodological quality of the cross-sectional studies¹⁴. Studies that fulfilled the methodological criteria of more than 18 points were classified as high quality, between 12–18 as moderate quality and below 12 were classified as low quality.

ZSL and PM independently reviewed the retrieved articles in two stages. First, relevance was assessed from the title and abstract and if relevance was still unclear, the full text was read. Any disagreement was referred to a third reviewer (CC or ZAB). Factors responsible for health care seeking patterns for maternal and newborn health from observational studies and qualitative studies were separately analysed. Study design, country of study, setting, participants, and results were recorded for each study. We performed a narrative synthesis of the findings from the included studies, as included studies were observational and qualitative in nature.

Results

Our search strategy identified 20,944 articles, of which 232 met the inclusion criteria ([Figure 1](#)). We found and analysed 159 original studies (162 published papers), of which 115 were observational studies and 44 were qualitative studies (characteristics of included studies are included as extended data¹⁵. Observational studies were moderate to high in quality upon quality assessment.

Qualitative findings for delays in care and pathways of care seeking

Health-care-seeking patterns are complex phenomena, often confounded by several interlinked factors such as education of mothers, socio-economic status and age. More than half of the included observational studies reported that poor maternal health care utilization and giving birth at home is associated with lack of antenatal care, age, parity, education and employment status of women^{13,16–74}. On the other hand, seeking care for newborn illnesses depends on the severity of illness^{75–80} and gender of the baby, with preference being given to male children⁴⁸. Studies have reported that adequate health care seeking from skilled health care providers leads to fewer deaths and morbidities^{81–83}. Women who had good marital relationships with husbands were

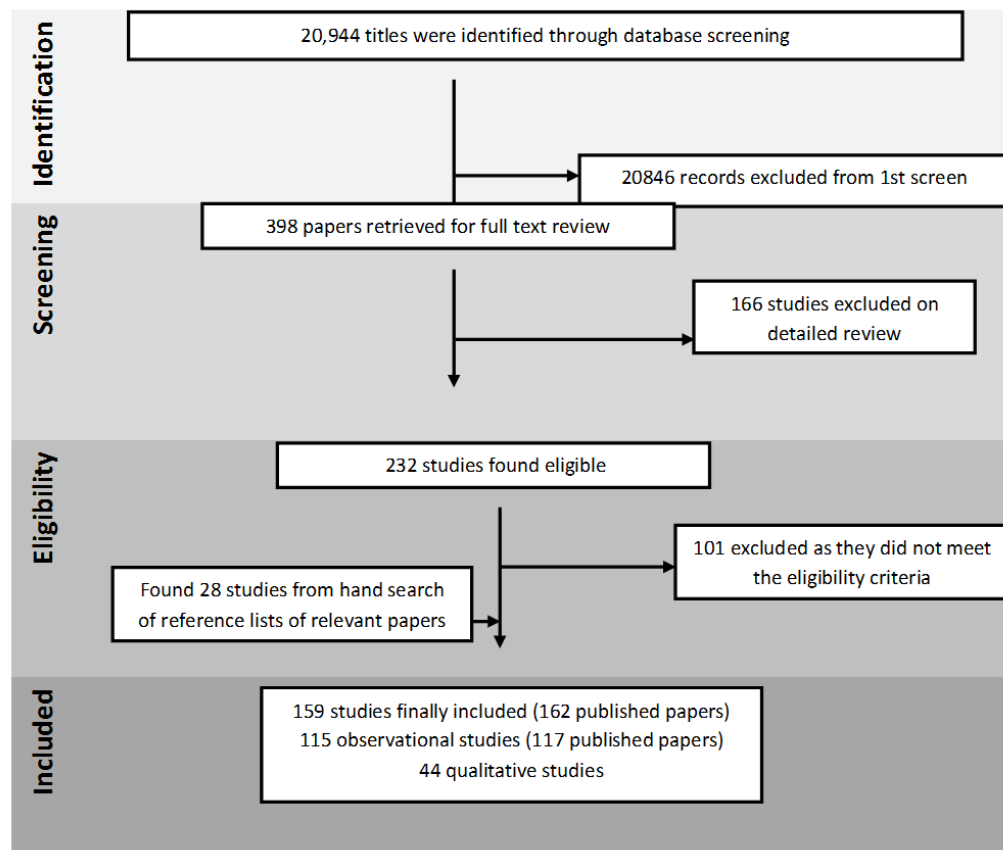


Figure 1. Search flow diagram.

more likely to report receiving antenatal care and institutional birth^{55,56,84-90}. Similarly, women who had good relationships with their mothers-in-law reported being able to attend or receive antenatal care, with the degree of bonding and communication of women with their mothers-in-law reported to be an important influencing factor⁹¹. We identified several qualitative themes in the section below that describe the reasons for delays in health care seeking and associated pathways.

Identifying the illness and first preferred level of care

Primary caregivers in all included studies were usually mothers; however, mothers-in-law, grandmothers, fathers, neighbours, traditional healers and opinion leaders in the community were among the many people involved as caregivers for mothers and babies. Across the studies, it was observed that mothers/families do seek care for neonatal illness⁸⁰; however, complications during pregnancy are not considered as an illness and many signs are considered as normal, even when painful and constant⁹²⁻¹⁰². In certain studies, bleeding was not considered to be a complication¹⁰³, and in such situations decisions to seek health care were often delayed. Women who expressed pain verbally were considered as disobedient and therefore maintaining silence was considered appropriate^{104,105}. Missing antenatal care visits were reported to be due to heavy and unavoidable workloads at home⁹¹, and a few studies reported that mothers-in-law privileged household chores over women's health^{91,99}. Some families perceived

that some common neonatal symptoms should or cannot be treated at health facilities and therefore traditional care should be sought¹⁰⁶.

In India, women during pregnancy are usually advised to be cautious while eating "hot" or "cold" food, and to eat less otherwise the baby can grow too large and therefore lead to a difficult birth⁹². A qualitative study from Pakistan (Baluchistan)¹⁰⁷ described that the *dai* (traditional birth attendant (TBA)) usually places mustard oil on her fingers and massages the vaginal walls to ease the birth, and inserts vaginal and anal pessaries after birth to help shrink the uterus and to provide support for the uterus and backbone. They also prefer women to eat *Goandh* (edible gum) combined with turmeric powder, and dried dates in milk to induce heavy vaginal bleeding so that all unclean blood is drained from the body, thus predisposing to postpartum haemorrhage. In situations when the placenta does not expel normally, the *dai* enters her bare hands in the uterus or puts hair into the mother's mouth to induce vomiting¹⁰³. Eating vegetables rather than meat during pregnancy is preferred as it is considered to increase the production of breastmilk and freshens its taste¹⁰⁸. During infant illnesses, mothers prefer to give '*rabadi*' (prepared by cooking millet flour and yogurt), '*khichchadi*' (a semi-liquid rice and pulses mixture) and '*mateera*' (watermelon curry) to their febrile children in conjunction with breastmilk¹⁰⁹.

While illnesses, particularly in women who are not pregnant, are considered unimportant, evil spirits and fate (Allah's will) are reported to be the cause of these illnesses^{103,110}. Faith healing is important in many cultures. A study from Ghana¹¹¹ named three major religions that practised faith healing and each religion has a specific healer. On the other hand, most of the communities in Asia and Africa believe that certain precautions during pregnancy or immediately after birth will ward off the evil eye (a gaze or stare superstitiously believed to cause harm) and will prevent the infant from getting sick^{92,112}. This includes isolating women and their baby in a room for a certain period of time after childbirth and lighting a fire at the entrance where they are confined⁹². In order to prevent them from evil eyes, people reported keeping the pregnancy secret from people outside of close relations⁹⁶.

Mothers may consult family and friends when the danger signs are not clear or unusually severe^{107,113}. However, in severe illness, decision-making power can be switched to more experienced members of the extended family, which can cause significant delays in decision-making. Many of the studies reported that in scenarios when women had money, they hurried to pursue treatment options from a health care facility despite several familial pressures. A study from Tanzania reported⁹⁵ that having an option of home birth was found to be a hurdle in emphasizing the importance of skilled birth care^{100,104,114–116}. Trust for someone from the same community, sharing the same values and speaking the same language, was another factor that encouraged women to give birth at home and with a TBA^{38,117}. However, it was apparent from the studies that if women continued to suffer, then they do seek care from western-trained care providers¹⁰⁷.

Barriers on deciding to seek care for illnesses and choice of care

Decision-making emerged as a complex issue. Decision-making power is less likely to be with the woman and mostly rests with their partners and mothers-in-law. Women who had no income source were usually those who had no rights for decision making¹¹⁸. Several studies reported that the major barrier for institutional care was gaining permission from husbands^{92,93,104,119–124}. Women are considered inferior to men and their disobedience often results in physical and emotional violence¹²³. If husbands are absent, women face difficulties in receiving permission from her husband's parents or other elders for seeking care and this results in even greater delays. Husbands and elders often have control over finances and women are mostly dependant on them^{38,93,99,108–110,117,121,122,125–131}. Deciding to seek care can incur transportation costs, user fees, cost of medicines, and possibly ensuing costs of misdiagnosis and treatment failures⁹³. Considering all these barriers, women often postpone seeking help, with the hope that the problem will subside on its own.

When a family is willing to seek care and arranges the money required, other challenges such as physical transference of mothers and newborns to health facilities becomes a problem. The situation is even worse if complications arise at night, when risk of being attacked by criminals' increases or when transport providers raise their taxi or car-hire charges^{96,118,121,122,125,127,130–143}. Studies on people living in very remote areas reported factors

such as distance to health facility and related transportation issues, lack of financial resources, encountering swollen rivers on the way, fear of encountering wild animals, shame about too many pregnancies or being of advanced age and pregnant as some of the critical reasons for not seeking care. Studies also reported other factors responsible for not seeking health care such as non-availability of staff at facility, rude behaviour of health care staff, and poor quality of care⁹⁶. Fear of operative procedures was reported as a factor hindering care-seeking¹⁴⁴. These were usually based on previous experience and contact with health care staff and the health care service received^{93,122,125,145,146}.

Cost is another important barrier to seeking care from trained health professional. However a study from rural Mexico reported that cost of care from TBAs is sometimes higher than facility birth but women prefer them because they can give birth at home¹⁴⁷. Many women also preferred giving birth at home because they preferred a squatting position for giving birth that was also endorsed by TBAs¹⁴⁷. Relatives being not allowed at facilities during the childbirth was another factor expressed for giving birth at home¹⁴⁷.

Women's previous encounters with health care staff and facilities were reported as a key factor for decision making¹⁴⁸. Further, many of the danger signs are not considered as pregnancy-related complications^{38,80,109,113,117,118,149}, and thus families seek help from traditional healers, community health workers or drug sellers. Households often regard accessible and less expensive care such as herbal and home remedies or locally available drugs more highly¹⁵⁰. Workers from these types of care were often praised as they give time to patients and consider their social and cultural aspects as well.

Receiving adequate care when facility is reached

Women and families usually opt for medically qualified birth attendants where women are perceived to have possible birth complications. Where TBAs detected a complication at home, women were provided with referrals. Women also preferred SBA when they wanted to have a tubal ligation performed¹⁴⁷. Studies reported that perceived fear of being torn in hospital, where Caesarean section was required¹⁵¹ discourages women to seek institutional care for childbirth¹⁰⁴. Lack of privacy at care facilities and being examined in the open are other factors for not seeking care at clinics¹⁵².

Pregnant women or mothers with ill newborns usually experienced long waiting times when seeking hospital care^{93,104,153,154}. Most of the included studies cited that health professionals have poor attitudes towards poor or pregnant women, which are stigmatizing^{118,131,144,145,155}. Studies pointed out that health care staff examine women in hurry and at many occasions did not clarify their concerns. Staff may stigmatize women, criticising them for their age and number of pregnancies and judge them on their practices for family planning¹⁵². Staff behaviour is therefore a major barrier for accessing care¹⁵¹.

Sometimes, women are referred to another facility due to lack of trained staff and functional equipment and supplies that lead to further delays. Women may be asked to pay for fuel for the

ambulance to take them to the other facility. They then may be required to pay for medicines and other supplies, and when stocks of these run out, there are further delays in receiving care¹¹⁸.

Discussion

It is often suggested that overwhelming maternal and neonatal mortalities and morbidities are closely linked with a number of interrelated delays that prevent a pregnant women or neonate from accessing the health care needed¹¹. Each delay is closely related to services, logistics, facilities and conditions. Our review identified factors associated with delays (Figure 2) and the pathways for health care seeking in cases of illnesses (Figure 3). Although the pathways of seeking care were not similar across all the studies, choices usually followed the same pattern if not the same levels. Depending on predisposing factors (be it God’s will, past experiences, user affordability, accessibility, availability or acceptability), the first choices for seeking care were for spiritual healers and immediate elder members of the family and community such as mothers-in-law and TBAs, who not only hold a respected position in the community but are generally considered as experienced and knowledgeable people. If not gaining any benefits from the care received from the first level, women then consult pharmacists, homeopaths and quack healers or untrained village doctors. However, the last choice (can be second or third) is usually the trained doctors, nurses or lady health visitors in health facilities.

Ineffective or inequitable decision making was reported as the biggest hurdle for seeking care during illnesses. Several cultural, economic, and health system related factors confound this further. Prompt identification of danger signs, autonomy of decision making, availability of finances, accessibility to health facility, and perceived quality of care play a major role in institutional

health care seeking. Distance and cost were highlighted as the two main reasons for causing delays in decision making. Inadequately equipped facilities further delays care¹⁵⁶. Improvement in medical care seeking can be achieved if behaviour change communication interventions are contextualized and meet specific needs of the community. Similar findings have been reported by an earlier review on determinants of skilled birth care and institutional births⁹.

This review highlights the reasons for delays and the ramifications of these delays on morbidity and mortality outcomes. Delays at each level serve as barriers, and strategies to overcome these may help and empower the communities to select and make early decisions. Cultural norms, societal values along with limited financial resources were underscored as major hindering factors for care seeking. It is therefore important that health system reforms related to maternal and newborn health should consider societal and cultural barriers and practices to improve their health care seeking. A major obstacle is women’s self-sufficiency and lack of empowerment to make decisions about their health. A change brought about in the attitude of the family members with emphasis on the need for women’s autonomy in making these crucial health decisions will have an immediate positive impact. Women should have the right to choose where they give birth, although it is important to help the woman comprehend the risks associated with these options. This could be achieved by proper mobilization of the entire family. At the same time, health systems should train health workers to provide and manage emergencies. A specific implementation strategy could be the provision of birthing kits to the TBAs which will ensure access to this facility to those residing in remote areas. This will reduce mortality arising from delay in the provision of emergency medical aid during childbirth. In addition,

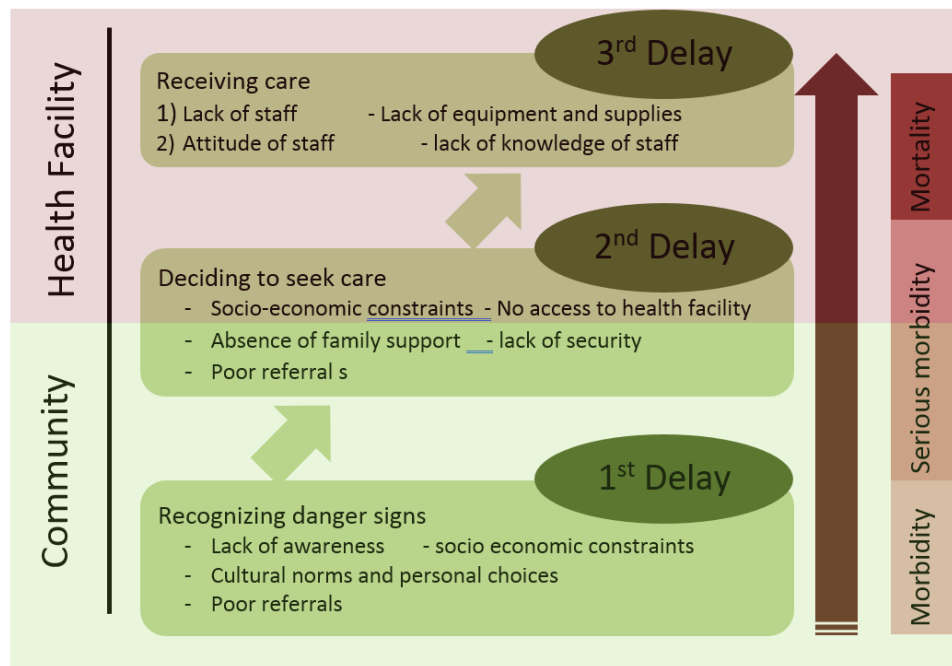


Figure 2. Factors associated with delays in seeking care for maternal and newborn illnesses.

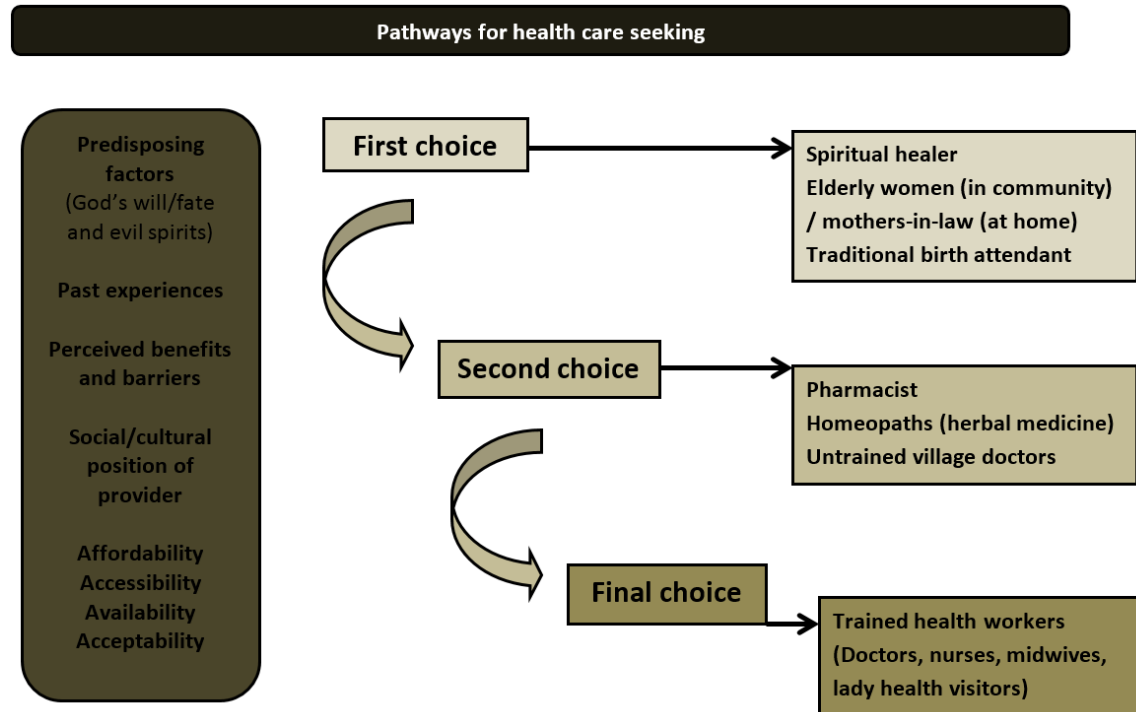


Figure 3. Pathways for health care seeking.

government should subsidize health care costs and should introduce schemes such as conditional cash transfers particularly for places where access to health care facility is an issue. These remedies have also been found to be cost-effective¹⁵⁷.

While we were able to extract the important factors associated with maternal and newborn health care seeking, the review also faced some methodological challenges. First, the findings from the observational studies need to be interpreted with caution as included studies employed different inclusion criteria. Second, the studies used different statistical modelling to control for confounders and clustering therefore made it hard to compare the results. Third, the findings, particularly from the qualitative studies, were from different geographical settings and the barriers faced in one community may not exist or differ in another community. Therefore, strategies to improve health care seeking need to be context- and community-specific. Earlier review of experimental studies suggested that simple strategies such as community mobilization and home visitation via community health workers may improve health care seeking and perinatal survival¹⁰. Our findings from the observational and qualitative studies have identified the important barriers of health care seeking that need to be considered while developing strategies.

Conclusion

Despite all the progress made towards improving maternal and newborn health in past few decades, many LMICs could not reach the MDGs. This review has identified several socio-economic, cultural and health services related factors that

contribute to delays in health care seeking. Effective implementation of strategies after controlling for these factors of delays such as increasing women's autonomy would lead to significant improvement in mortality, morbidity and care seeking outcomes.

Data availability

Underlying data

All data underlying the results are available as part of the article and no additional source data are required.

Extended data

Open Science Framework: Health care seeking. <https://doi.org/10.17605/OSF.IO/5UT6X>¹⁵. Supplementary Files contain information concerning characteristics of the studies included in this review.

Reporting guidelines

Open Science Framework: PRISMA 2009 Checklist for this study. <https://doi.org/10.17605/OSF.IO/5UT6X>¹⁵.

Data are available under the terms of the [Creative Commons Zero "No rights reserved" data waiver](#) (CC0 1.0 Public domain dedication).

Grant information

This review was part of a doctoral thesis that was funded by the University of Adelaide, Australia.

The funders had no role in study design, data collection and analysis, decision to publish, or preparation of the manuscript.

References

- WHO: **Trends in maternal mortality: 1990 to 2010**. In: Geneva, Switzerland: WHO, UNICEF, UNFPA and The World Bank estimates; 2012.
[Reference Source](#)
- Lozano R, Wang H, Foreman KJ, *et al.*: **Progress towards Millennium Development Goals 4 and 5 on maternal and child mortality: an updated systematic analysis**. *Lancet*. 2011; **378**(9797): 1139–1165.
[PubMed Abstract](#) | [Publisher Full Text](#)
- World Health Organization: **Trends in Maternal Mortality: 1990 to 2015**. In: *Estimates by WHO, UNICEF, UNFPA, The World Bank and the United Nations Population Division*. 2015.
[Reference Source](#)
- Levels & Trends in Child Mortality: Report 2014. Estimates Developed by the UN Inter-agency Group for Child Mortality Estimation**. In.: UN Child Fund, WHO, The World Bank, UNPD; 2015.
[Reference Source](#)
- UNICEF: **THE STATE OF THE WORLD'S CHILDREN 2008** In. New York; 2008.
[Reference Source](#)
- Darmstadt GL, Lee AC, Cousens S, *et al.*: **60 Million non-facility births: who can deliver in community settings to reduce intrapartum-related deaths?** *Int J Gynaecol Obstet*. 2009; **107** Suppl 1: S89–S112.
[PubMed Abstract](#) | [Publisher Full Text](#) | [Free Full Text](#)
- Prata N, Passano P, Rowen T, *et al.*: **Where there are (few) skilled birth attendants**. *J Health Popul Nutr*. 2011; **29**(2): 81–91.
[PubMed Abstract](#) | [Publisher Full Text](#) | [Free Full Text](#)
- Lawn JE, Kerber K, Enweronu-Laryea C, *et al.*: **3.6 million neonatal deaths—what is progressing and what is not?** *Semin Perinatol*. 2010; **34**(6): 371–386.
[PubMed Abstract](#) | [Publisher Full Text](#)
- Gabrysch S, Campbell OM: **Still too far to walk: literature review of the determinants of delivery service use**. *BMC Pregnancy Childbirth*. 2009; **9**: 34.
[PubMed Abstract](#) | [Publisher Full Text](#) | [Free Full Text](#)
- Lassi ZS, Middleton PF, Bhutta ZA, *et al.*: **Strategies for improving health care seeking for maternal and newborn illnesses in low- and middle-income countries: a systematic review and meta-analysis**. *Glob Health Action*. 2016; **9**: 31408.
[PubMed Abstract](#) | [Publisher Full Text](#) | [Free Full Text](#)
- Thaddeus S, Maine D: **Too far to walk: maternal mortality in context**. *Soc Sci Med*. 1994; **38**(8): 1091–1110.
[PubMed Abstract](#) | [Publisher Full Text](#)
- Jones ML: **Application of systematic review methods to qualitative research: practical issues**. *J Adv Nurs*. 2004; **48**(3): 271–278.
[PubMed Abstract](#) | [Publisher Full Text](#)
- Moher D, Liberati A, Tetzlaff J, *et al.*: **Preferred reporting items for systematic reviews and meta-analyses: the PRISMA statement**. *PLoS Med*. 2009; **6**(7): e1000097.
[PubMed Abstract](#) | [Publisher Full Text](#) | [Free Full Text](#)
- STROBE Statement—Checklist of items that should be included in reports of cross-sectional studies**. Available from: STROBE Statement—Checklist of items that should be included in reports of cross-sectional studies.
[Reference Source](#)
- Lassi Z: **Health care seeking**. 2019.
<http://www.doi.org/10.17605/OSF.IO/SUT6X>
- Anson O: **Utilization of maternal care in rural HeBei Province, the People's Republic of China: individual and structural characteristics**. *Health Policy*. 2004; **70**(2): 197–206.
[PubMed Abstract](#) | [Publisher Full Text](#)
- Alexandre PK, Saint-Jean G, Crandall L, *et al.*: **Prenatal care utilization in rural areas and urban areas of Haiti**. *Rev Panam Salud Publica*. 2005; **18**(2): 84–92.
[PubMed Abstract](#) | [Publisher Full Text](#)
- Adhikari R, Sawangdee Y: **Influence of women's autonomy on infant mortality in Nepal**. *Reprod Health*. 2011; **8**: 7.
[PubMed Abstract](#) | [Publisher Full Text](#) | [Free Full Text](#)
- Anwar I, Sami M, Akhtar N, *et al.*: **Inequity in maternal health-care services: evidence from home-based skilled-birth-attendant programmes in Bangladesh**. *Bull World Health Organ*. 2008; **86**(4): 252–259.
[PubMed Abstract](#) | [Publisher Full Text](#) | [Free Full Text](#)
- Fosu GB: **Childhood morbidity and health services utilization: cross-national comparisons of user-related factors from DHS data**. *Soc Sci Med*. 1994; **38**(9): 1209–1220.
[PubMed Abstract](#) | [Publisher Full Text](#)
- Liang J, Mao M, Dai L, *et al.*: **Neonatal mortality due to preterm birth at 28-36 weeks' gestation in China, 2003-2008**. *Paediatr Perinat Epidemiol*. 2011; **25**(6): 593–600.
[PubMed Abstract](#) | [Publisher Full Text](#)
- Malqvist M, Nga NT, Eriksson L, *et al.*: **Delivery care utilisation and care-seeking in the neonatal period: a population-based study in Vietnam**. *Ann Trop Paediatr*. 2008; **28**(3): 191–198.
[PubMed Abstract](#) | [Publisher Full Text](#)
- More NS, Alcock G, Das S, *et al.*: **Spoilt for choice? Cross-sectional study of care-seeking for health problems during pregnancy in Mumbai slums**. *Glob Public Health*. 2011; **6**(7): 746–759.
[PubMed Abstract](#) | [Publisher Full Text](#) | [Free Full Text](#)
- Obermeyer CM, Potter JE: **Maternal health care utilization in Jordan: a study of patterns and determinants**. *Stud Fam Plann*. 1991; **22**(3): 177–187.
[PubMed Abstract](#) | [Publisher Full Text](#)
- Rahman MH, Mosley WH, Ahmed S, *et al.*: **Does service accessibility reduce socioeconomic differentials in maternity care seeking? Evidence from rural Bangladesh**. *J Biosoc Sci*. 2008; **40**(1): 19–33.
[PubMed Abstract](#) | [Publisher Full Text](#)
- Rai RK, Singh PK, Singh L: **Utilization of maternal health care services among married adolescent women: insights from the Nigeria Demographic and Health Survey, 2008**. *Womens Health Issues*. 2012; **22**(4): e407–414.
[PubMed Abstract](#) | [Publisher Full Text](#)
- Ramos S, Karolinski A, Romero M, *et al.*: **A comprehensive assessment of maternal deaths in Argentina: translating multicentre collaborative research into action**. *Bull World Health Organ*. 2007; **85**(8): 615–622.
[PubMed Abstract](#) | [Publisher Full Text](#) | [Free Full Text](#)
- Ronsmans C, Chowdhury ME, Kobliński M, *et al.*: **Care seeking at time of childbirth, and maternal and perinatal mortality in Matlab, Bangladesh**. *Bull World Health Organ*. 2010; **88**(4): 289–296.
[PubMed Abstract](#) | [Publisher Full Text](#) | [Free Full Text](#)
- Rööst M, Altamirano VC, Liljestrand J, *et al.*: **Does antenatal care facilitate utilization of emergency obstetric care? A case-referent study of near-miss morbidity in Bolivia**. *Acta Obstet Gynecol Scand*. 2010; **89**(3): 335–342.
[PubMed Abstract](#) | [Publisher Full Text](#)
- Saini AG, Bharti B, Gautam S: **Healthcare behavior and expenditure in an urban slum in relation to birth experience and newborn care**. *J Trop Pediatr*. 2012; **58**(3): 214–219.
[PubMed Abstract](#) | [Publisher Full Text](#)
- Sein KK: **Maternal health care utilization among ever married youths in Kyimyindaing Township, Myanmar**. *Matern Child Health J*. 2012; **16**(5): 1021–1030.
[PubMed Abstract](#) | [Publisher Full Text](#)
- Sharma SK, Vong-Ek P: **Contextual influences on obstetric morbidity and related care seeking behaviour in Thailand**. *J Health Psychol*. 2009; **14**(1): 108–123.
[PubMed Abstract](#) | [Publisher Full Text](#)
- Brenner JL, Kabakyenga J, Kyomuhangi T, *et al.*: **Can volunteer community health workers decrease child morbidity and mortality in southwestern Uganda? An impact evaluation**. *PLoS One*. 2011; **6**(12): e27997.
[PubMed Abstract](#) | [Publisher Full Text](#) | [Free Full Text](#)
- Van der Stuyft P, Sorensen SC, Delgado E, *et al.*: **Health seeking behaviour for child illness in rural Guatemala**. *Trop Med Int Health*. 1996; **1**(2): 161–170.
[PubMed Abstract](#) | [Publisher Full Text](#)
- Sutrisna B, Reingold A, Kresno S, *et al.*: **Care-seeking for fatal illnesses in young children in Indramayu, west Java, Indonesia**. *Lancet*. 1993; **342**(8874): 787–789.
[PubMed Abstract](#) | [Publisher Full Text](#)
- Teerawichitchainan B, Phillips JF: **Ethnic differentials in parental health seeking for childhood illness in Vietnam**. *Soc Sci Med*. 2008; **66**(5): 1118–1130.
[PubMed Abstract](#) | [Publisher Full Text](#)
- Ogunlesi TA, Olanrewaju DM: **Socio-demographic factors and appropriate health care-seeking behavior for childhood illnesses**. *J Trop Pediatr*. 2010; **56**(6): 379–385.
[PubMed Abstract](#) | [Publisher Full Text](#)
- Titaley GR, Dibley MJ, Roberts CL: **Factors associated with underutilization of antenatal care services in Indonesia: results of Indonesia Demographic and Health Survey 2002/2003 and 2007**. *BMC Public Health*. 2010; **10**: 485.
[PubMed Abstract](#) | [Publisher Full Text](#) | [Free Full Text](#)
- Toan NV, Hoa HT, Trong PV, *et al.*: **Utilisation of reproductive health services in rural Vietnam; are there equal opportunities to plan and protect pregnancies?** *J Epidemiol Community Health*. 1996; **50**(4): 451–455.
[PubMed Abstract](#) | [Publisher Full Text](#) | [Free Full Text](#)
- Trinh LT, Dibley MJ, Byles J: **Determinants of antenatal care utilization in three rural areas of Vietnam**. *Public Health Nurs*. 2007; **24**(4): 300–310.
[PubMed Abstract](#) | [Publisher Full Text](#)
- Ye Y, Yoshida Y, Harun-Or-Rashid M, *et al.*: **Factors affecting the utilization of antenatal care services among women in Kham District, Xiengkhouang province, Lao PDR**. *Nagoya J Med Sci*. 2010; **72**(1–2): 23–33.
[PubMed Abstract](#) | [Publisher Full Text](#)
- Erci B: **Barriers to utilization of prenatal care services in Turkey**. *J Nurs Scholarsh*. 2003; **35**(3): 269–273.
[PubMed Abstract](#) | [Publisher Full Text](#)
- Uzma A, Underwood P, Atkinson D, *et al.*: **Postpartum health in a Dhaka slum**. *Soc Sci Med*. 1999; **48**(3): 313–320.
[PubMed Abstract](#) | [Publisher Full Text](#)
- Fotso JC, Ezeh A, Oronje R: **Provision and use of maternal health services among urban poor women in Kenya: what do we know and what can we do?** *J Urban Health*. 2008; **85**(3): 428–442.
[PubMed Abstract](#) | [Publisher Full Text](#) | [Free Full Text](#)
- Sunil TS, Rajaram S, Zottarelli LK: **Do individual and program factors matter in**

- the utilization of maternal care services in rural India?: a theoretical approach. *Soc Sci Med.* 2006; **62**(8): 1943–1957.
[PubMed Abstract](#) | [Publisher Full Text](#)
46. Schillaci MA, Waitzkin H, Carson EA, *et al.*: Prenatal care utilization for mothers from low-income areas of New Mexico, 1989–1999. *PLoS One.* 2010; **5**(9): pii: e12809.
[PubMed Abstract](#) | [Publisher Full Text](#) | [Free Full Text](#)
47. Abraham S, Joshi S, Kumar V, *et al.*: Indian experience of home based mothers card: ICMR task force study. *Indian J Pediatr.* 1991; **58**(6): 795–804.
[PubMed Abstract](#) | [Publisher Full Text](#)
48. Ahmed S, Sobhan F, Islam A, *et al.*: Neonatal morbidity and care-seeking behaviour in rural Bangladesh. *J Trop Pediatr.* 2001; **47**(2): 98–105.
[PubMed Abstract](#) | [Publisher Full Text](#)
49. Carlson M, Smith Paintain L, Bruce J, *et al.*: Who attends antenatal care and expanded programme on immunization services in Chad, Mali and Niger? The implications for insecticide-treated net delivery. *Malar J.* 2011; **10**: 341.
[PubMed Abstract](#) | [Publisher Full Text](#) | [Free Full Text](#)
50. Chamberlain J, Watt S, Mohide P, *et al.*: Women's perception of self-worth and access to health care. *Int J Gynaecol Obstet.* 2007; **98**(1): 75–79.
[PubMed Abstract](#) | [Publisher Full Text](#)
51. Ciceklioglu M, Soyer MT, Ocek ZA: Factors associated with the utilization and content of prenatal care in a western urban district of Turkey. *Int J Qual Health Care.* 2005; **17**(6): 533–539.
[PubMed Abstract](#) | [Publisher Full Text](#)
52. El-Kak F, Khawaja M, Salem M, *et al.*: Care-seeking behavior of women with reproductive health problems from low-income areas of Beirut. *Int J Gynaecol Obstet.* 2009; **104**(1): 60–63.
[PubMed Abstract](#) | [Publisher Full Text](#)
53. Elo IT: Utilization of maternal health-care services in Peru: the role of women's education. *Health Transit Rev.* 1992; **2**(1): 49–69.
[PubMed Abstract](#)
54. Okafor CB: Availability and use of services for maternal and child health care in rural Nigeria. *Int J Gynaecol Obstet.* 1991; **34**(4): 331–346.
[PubMed Abstract](#) | [Publisher Full Text](#)
55. Haque SE, Rahman M, Mostofa MG, *et al.*: Reproductive health care utilization among young mothers in Bangladesh: does autonomy matter? *Womens Health Issues.* 2012; **22**(2): e171–180.
[PubMed Abstract](#) | [Publisher Full Text](#)
56. Habibov NN, Fan L: Modelling prenatal health care utilization in Tajikistan using a two-stage approach: implications for policy and research. *Health Policy Plan.* 2008; **23**(6): 443–451.
[PubMed Abstract](#) | [Publisher Full Text](#)
57. van den Heuvel OA, de Mey WG, Buddingh H, *et al.*: Use of maternal care in a rural area of Zimbabwe: a population-based study. *Acta Obstet Gynecol Scand.* 1999; **78**(10): 838–846.
[PubMed Abstract](#) | [Publisher Full Text](#)
58. Hirose A, Borchert M, Niksear H, *et al.*: Difficulties leaving home: a cross-sectional study of delays in seeking emergency obstetric care in Herat, Afghanistan. *Soc Sci Med.* 2011; **73**(7): 1003–1013.
[PubMed Abstract](#) | [Publisher Full Text](#)
59. Gombojav N, Manaseki-Holland S, Pollock J, *et al.*: The effects of social variables on symptom recognition and medical care seeking behaviour for acute respiratory infections in infants in urban Mongolia. *Arch Dis Child.* 2009; **94**(11): 849–854.
[PubMed Abstract](#) | [Publisher Full Text](#)
60. Hazarika I: Factors that determine the use of skilled care during delivery in India: implications for achievement of MDG-5 targets. *Matern Child Health J.* 2011; **15**(8): 1381–1388.
[PubMed Abstract](#) | [Publisher Full Text](#)
61. Ibrahim SA, Omer MI, Amin IK, *et al.*: The role of the village midwife in detection of high risk pregnancies and newborns. *Int J Gynaecol Obstet.* 1992; **39**(2): 117–122.
[PubMed Abstract](#) | [Publisher Full Text](#)
62. Mercer A, Haseen F, Huq NL, *et al.*: Risk factors for neonatal mortality in rural areas of Bangladesh served by a large NGO programme. *Health Policy Plan.* 2006; **21**(6): 432–443.
[PubMed Abstract](#) | [Publisher Full Text](#)
63. Ogunlesi TA, Ogunlesi FB: Family socio-demographic factors and maternal obstetric factors influencing appropriate health-care seeking behaviours for newborn jaundice in Sagamu, Nigeria. *Matern Child Health J.* 2012; **16**(3): 677–684.
[PubMed Abstract](#) | [Publisher Full Text](#)
64. Rani M, Bonu S: Rural Indian women's care-seeking behavior and choice of provider for gynecological symptoms. *Stud Fam Plann.* 2003; **34**(3): 173–185.
[PubMed Abstract](#) | [Publisher Full Text](#)
65. Ndugwa RP, Zulu EM: Child morbidity and care-seeking in Nairobi slum settlements: the role of environmental and socio-economic factors. *J Child Health Care.* 2008; **12**(4): 314–328.
[PubMed Abstract](#) | [Publisher Full Text](#)
66. Enato EF, Mens PF, Okhamafe AO, *et al.*: *Plasmodium falciparum* malaria in pregnancy: prevalence of peripheral parasitaemia, anaemia and malaria care-seeking behaviour among pregnant women attending two antenatal clinics in Edo State, Nigeria. *J Obstet Gynaecol.* 2009; **29**(4): 301–306.
[PubMed Abstract](#) | [Publisher Full Text](#)
67. Regassa N: Antenatal and postnatal care service utilization in southern Ethiopia: a population-based study. *Afr Health Sci.* 2011; **11**(3): 390–397.
[PubMed Abstract](#) | [Free Full Text](#)
68. Galvan J, Woelk GB, Mahomed K, *et al.*: Prenatal care utilization and foetal outcomes at Harare Maternity Hospital, Zimbabwe. *Cent Afr J Med.* 2001; **47**(4): 87–92.
[PubMed Abstract](#)
69. Khan AK: Obstetric complications: the health care seeking behaviour & cost pressure generated from it in rural Bangladesh. *Mymensingh Med J.* 2002; **11**(2): 110–112.
[PubMed Abstract](#)
70. Okusanya BO, Okogbo FO, Momoh MM, *et al.*: Maternal mortality and delay: socio-demographic characteristics of maternal deaths with delay in Iruua, Nigeria. *Niger J Med.* 2007; **16**(1): 38–41.
[PubMed Abstract](#) | [Publisher Full Text](#)
71. Iyoke CA, Ifeadike CO, Nnebue CC, *et al.*: Perception and care-seeking behaviour for post partum morbidity among mothers in Enugu south east, Nigeria. *Niger J Med.* 2011; **20**(2): 260–265.
[PubMed Abstract](#)
72. Bloom SS, Wypij D, Das Gupta M: Dimensions of women's autonomy and the influence on maternal health care utilization in a north Indian city. *Demography.* 2001; **38**(1): 67–78.
[PubMed Abstract](#) | [Publisher Full Text](#)
73. Bazzano AN, Kirkwood BR, Tawiah-Agyemang C, *et al.*: Beyond symptom recognition: care-seeking for ill newborns in rural Ghana. *Trop Med Int Health.* 2008; **13**(1): 123–128.
[PubMed Abstract](#) | [Publisher Full Text](#)
74. Alcock G, Das S, Shah More N, *et al.*: Examining inequalities in uptake of maternal health care and choice of provider in underserved urban areas of Mumbai, India: a mixed methods study. *BMC Pregnancy Childbirth.* 2015; **15**: 231.
[PubMed Abstract](#) | [Publisher Full Text](#) | [Free Full Text](#)
75. Goldman N, Heuveline P: Health-seeking behaviour for child illness in Guatemala. *Trop Med Int Health.* 2000; **5**(2): 145–155.
[PubMed Abstract](#) | [Publisher Full Text](#)
76. Amarasinghe de Silva MW, Wijekoon A, Hornik R, *et al.*: Care seeking in Sri Lanka: one possible explanation for low childhood mortality. *Soc Sci Med.* 2001; **53**(10): 1363–1372.
[PubMed Abstract](#) | [Publisher Full Text](#)
77. Mash D, Aschenaki K, Kedamo T, *et al.*: Community and facility surveys illuminate the pathway to child survival in Liben Woreda, Ethiopia. *East Afr Med J.* 2003; **80**(9): 463–469.
[PubMed Abstract](#) | [Publisher Full Text](#)
78. Gupta N, Jain SK, Chawla U, *et al.*: An evaluation of diarrheal diseases and acute respiratory infections control programmes in a Delhi slum. *Indian J Pediatr.* 2007; **74**(5): 471–476.
[PubMed Abstract](#) | [Publisher Full Text](#)
79. Delgado E, Sorensen SC, Van der Stuyft P: Health seeking behaviour and self-treatment for common childhood symptoms in rural Guatemala. *Ann Soc Belg Med Trop.* 1994; **74**(2): 161–168.
[PubMed Abstract](#)
80. de Zoysa I, Bhandari N, Akhtari N, *et al.*: Careseeking for illness in young infants in an urban slum in India. *Soc Sci Med.* 1998; **47**(12): 2101–2111.
[PubMed Abstract](#) | [Publisher Full Text](#)
81. Adair T, Pardoisi JF, Rao C, *et al.*: Access to health services and early age mortality in Ende, Indonesia. *Indian J Pediatr.* 2012; **79**(5): 612–618.
[PubMed Abstract](#) | [Publisher Full Text](#)
82. Okong P, Byamugisha J, Mirembe F, *et al.*: Audit of severe maternal morbidity in Uganda—implications for quality of obstetric care. *Acta Obstet Gynecol Scand.* 2006; **85**(7): 797–804.
[PubMed Abstract](#) | [Publisher Full Text](#)
83. Safdar S, Inam SN, Omair A, *et al.*: Maternal health care in a rural area of Pakistan. *J Pak Med Assoc.* 2002; **52**(7): 308–311.
[PubMed Abstract](#)
84. Allendorf K: The quality of family relationships and use of maternal health-care services in India. *Stud Fam Plann.* 2010; **41**(4): 263–276.
[PubMed Abstract](#) | [Publisher Full Text](#) | [Free Full Text](#)
85. Kamiya Y: Women's autonomy and reproductive health care utilisation: empirical evidence from Tajikistan. *Health Policy.* 2011; **102**(2–3): 304–313.
[PubMed Abstract](#) | [Publisher Full Text](#)
86. Rahman MM, Kabir M, Shahidullah M: Adolescent self reported reproductive morbidity and health care seeking behaviour. *J Ayub Med Coll Abbottabad.* 2004; **16**(2): 9–14.
[PubMed Abstract](#)
87. Kumar V, Mohanty S, Kumar A, *et al.*: Effect of community-based behaviour change management on neonatal mortality in Shivgarh, Uttar Pradesh, India: a cluster-randomised controlled trial. *Lancet.* 2008; **372**(9644): 1151–1162.
[PubMed Abstract](#) | [Publisher Full Text](#)
88. Granich R, Cantwell MF, Long K, *et al.*: Patterns of health seeking behavior during episodes of childhood diarrhea: a study of Tzotzil-speaking Mayans in the highlands of Chiapas, Mexico. *Soc Sci Med.* 1999; **48**(4): 489–495.
[PubMed Abstract](#) | [Publisher Full Text](#)
89. Knobel HH, Yang WS, Ho MS: Urban-rural and regional differences in infant mortality in Taiwan. *Soc Sci Med.* 1994; **39**(6): 815–822.
[PubMed Abstract](#) | [Publisher Full Text](#)

90. Thapa DK, Niehof A: **Women's autonomy and husbands' involvement in maternal health care in Nepal.** *Soc Sci Med.* 2013; **93**: 1–10.
[PubMed Abstract](#) | [Publisher Full Text](#)
91. Simkhada B, Porter MA, van Teijlingen ER: **The role of mothers-in-law in antenatal care decision-making in Nepal: a qualitative study.** *BMC Pregnancy Childbirth.* 2010; **10**: 34.
[PubMed Abstract](#) | [Publisher Full Text](#) | [Free Full Text](#)
92. Awasthi S, Srivastava NM, Agarwal GG, *et al.*: **Effect of behaviour change communication on qualified medical care-seeking for sick neonates among urban poor in Lucknow, northern India: a before and after intervention study.** *Trop Med Int Health.* 2009; **14**(10): 1199–1209.
[PubMed Abstract](#) | [Publisher Full Text](#)
93. Castro R, Campero L, Hernandez B, *et al.*: **A study on maternal mortality in Mexico through a qualitative approach.** *J Womens Health Gen Based Med.* 2000; **9**(6): 679–690.
[PubMed Abstract](#) | [Publisher Full Text](#)
94. Rabi KA, Adewunmi AA, Akinlusi FM, *et al.*: **Female reproductive tract infections: understandings and care seeking behaviour among women of reproductive age in Lagos, Nigeria.** *BMC Womens Health.* 2010; **10**: 8.
[PubMed Abstract](#) | [Publisher Full Text](#) | [Free Full Text](#)
95. Magoma M, Requejo J, Campbell OM, *et al.*: **High ANC coverage and low skilled attendance in a rural Tanzanian district: a case for implementing a birth plan intervention.** *BMC Pregnancy Childbirth.* 2010; **10**: 13.
[PubMed Abstract](#) | [Publisher Full Text](#) | [Free Full Text](#)
96. Mathole T, Lindmark G, Majoko F, *et al.*: **A qualitative study of women's perspectives of antenatal care in a rural area of Zimbabwe.** *Midwifery.* 2004; **20**(2): 122–132.
[PubMed Abstract](#) | [Publisher Full Text](#)
97. Rosato M, Mwansambo CW, Kazembe PN, *et al.*: **Women's groups' perceptions of maternal health issues in rural Malawi.** *Lancet.* 2006; **368**(9542): 1180–1188.
[PubMed Abstract](#) | [Publisher Full Text](#)
98. Sibley LM, Hruschka D, Kalim N, *et al.*: **Cultural theories of postpartum bleeding in Matlab, Bangladesh: implications for community health intervention.** *J Health Popul Nutr.* 2009; **27**(3): 379–390.
[PubMed Abstract](#) | [Publisher Full Text](#) | [Free Full Text](#)
99. Wong GC, Li VC, Burris MA, *et al.*: **Seeking women's voices: setting the context for women's health interventions in two rural counties in Yunnan, China.** *Soc Sci Med.* 1995; **41**(8): 1147–1157.
[PubMed Abstract](#) | [Publisher Full Text](#)
100. Barua A, Kurz K: **Reproductive health-seeking by married adolescent girls in Maharashtra, India.** *Reprod Health Matters.* 2001; **9**(17): 53–62.
[PubMed Abstract](#) | [Publisher Full Text](#)
101. Abrahams N, Jewkes R, Mvo Z: **Health care-seeking practices of pregnant women and the role of the midwife in Cape Town, South Africa.** *J Midwifery Womens Health.* 2001; **46**(4): 240–247.
[PubMed Abstract](#) | [Publisher Full Text](#)
102. Gurung G: **Practices on immediate care of newborn in the communities of Kailali district.** *Nepal Med Coll J.* 2008; **10**(1): 41–44.
[PubMed Abstract](#)
103. Kalim N, Anwar I, Khan J, *et al.*: **Postpartum haemorrhage and eclampsia: differences in knowledge and care-seeking behaviour in two districts of Bangladesh.** *J Health Popul Nutr.* 2009; **27**(2): 156–169.
[PubMed Abstract](#) | [Publisher Full Text](#) | [Free Full Text](#)
104. Sikder SS, Labrique AB, Ullah B, *et al.*: **Accounts of severe acute obstetric complications in rural Bangladesh.** *BMC Pregnancy Childbirth.* 2011; **11**: 76.
[PubMed Abstract](#) | [Publisher Full Text](#) | [Free Full Text](#)
105. Committee on Nutrition: **Calcium Requirements of Infants, Children, and Adolescents.** *Pediatrics.* 1999; **104**(5): 1152–1157.
[Publisher Full Text](#)
106. Okyere E, Tawiah-Agyemang C, Manu A, *et al.*: **Newborn care: the effect of a traditional illness, asram, in Ghana.** *Ann Trop Paediatr.* 2010; **30**(4): 321–328.
[PubMed Abstract](#) | [Publisher Full Text](#)
107. Fikree FF, Ali T, Durocher JM, *et al.*: **Health service utilization for perceived postpartum morbidity among poor women living in Karachi.** *Soc Sci Med.* 2004; **59**(4): 681–694.
[PubMed Abstract](#) | [Publisher Full Text](#)
108. Wulandari LP, Klinken Whelan A: **Beliefs, attitudes and behaviours of pregnant women in Bali.** *Midwifery.* 2011; **27**(6): 867–871.
[PubMed Abstract](#) | [Publisher Full Text](#)
109. Yadav SP: **A study of treatment seeking behaviour for malaria and its management in febrile children in rural part of desert, Rajasthan, India.** *J Vector Borne Dis.* 2010; **47**(4): 235–242.
[PubMed Abstract](#)
110. Patel Z, Kumar V, Singh P, *et al.*: **Feasibility of community neonatal death audits in rural Uttar Pradesh, India.** *J Perinatol.* 2007; **27**(9): 556–564.
[PubMed Abstract](#) | [Publisher Full Text](#)
111. Farnes C, Beckstrand RL, Callister LC: **Help-seeking behaviours in childbearing women in Ghana, West Africa.** *Int Nurs Rev.* 2011; **58**(4): 491–497.
[PubMed Abstract](#) | [Publisher Full Text](#)
112. Yassin K, Laaser U, Kraemer A: **Maternal morbidity in rural upper Egypt: levels, determinants, and care seeking.** *Health Care Women Int.* 2003; **24**(5): 452–467.
[PubMed Abstract](#) | [Publisher Full Text](#)
113. Moran AC, Winch PJ, Sultana N, *et al.*: **Patterns of maternal care seeking behaviours in rural Bangladesh.** *Trop Med Int Health.* 2007; **12**(7): 823–832.
[PubMed Abstract](#) | [Publisher Full Text](#)
114. Pettersson KO, Christensson K, de Freitas Eda G, *et al.*: **Adaptation of health care seeking behavior during childbirth: focus group discussions with women living in the suburban areas of Luanda, Angola.** *Health Care Women Int.* 2004; **25**(3): 255–280.
[PubMed Abstract](#) | [Publisher Full Text](#)
115. Khadduri R, Marsh DR, Rasmussen B, *et al.*: **Household knowledge and practices of newborn and maternal health in Haripur district, Pakistan.** *J Perinatol.* 2008; **28**(3): 182–187.
[PubMed Abstract](#) | [Publisher Full Text](#)
116. Head SK, Yount KM, Sibley LM: **Delays in recognition of and care-seeking response to prolonged labor in Bangladesh.** *Soc Sci Med.* 2011; **72**(7): 1157–1168.
[PubMed Abstract](#) | [Publisher Full Text](#)
117. Titaley CR, Hunter CL, Dibley MJ, *et al.*: **Why do some women still prefer traditional birth attendants and home delivery?: a qualitative study on delivery care services in West Java Province, Indonesia.** *BMC Pregnancy Childbirth.* 2010; **10**: 43.
[PubMed Abstract](#) | [Publisher Full Text](#) | [Free Full Text](#)
118. Essendi H, Mills S, Fotso JC: **Barriers to formal emergency obstetric care services' utilization.** *J Urban Health.* 2011; **88** Suppl 2: S356–369.
[PubMed Abstract](#) | [Publisher Full Text](#) | [Free Full Text](#)
119. Schooley J, Mundt C, Wagner P, *et al.*: **Factors influencing health care-seeking behaviours among Mayan women in Guatemala.** *Midwifery.* 2009; **25**(4): 411–421.
[PubMed Abstract](#) | [Publisher Full Text](#)
120. White K, Small M, Frederic R, *et al.*: **Health seeking behavior among pregnant women in rural Haiti.** *Health Care Women Int.* 2006; **27**(9): 822–838.
[PubMed Abstract](#) | [Publisher Full Text](#)
121. Atuyambe L, Mirembe F, Annika J, *et al.*: **Seeking safety and empathy: adolescent health seeking behavior during pregnancy and early motherhood in central Uganda.** *J Adolesc.* 2009; **32**(4): 781–796.
[PubMed Abstract](#) | [Publisher Full Text](#)
122. Lubbock LA, Stephenson RB: **Utilization of maternal health care services in the department of Matagalpa, Nicaragua.** *Rev Panam Salud Publica.* 2008; **24**(2): 75–84.
[PubMed Abstract](#) | [Publisher Full Text](#)
123. Pritham UA, Sammons LN: **Korean women's attitudes toward pregnancy and prenatal care.** *Health Care Women Int.* 1993; **14**(2): 145–153.
[PubMed Abstract](#) | [Publisher Full Text](#)
124. Birungi H, Obare F, van der Kwaak A, *et al.*: **Maternal health care utilization among HIV-positive female adolescents in Kenya.** *Int Perspect Sex Reprod Health.* 2011; **37**(3): 143–149.
[PubMed Abstract](#) | [Publisher Full Text](#)
125. Walraven G, Telfer M, Rowley J, *et al.*: **Maternal mortality in rural Gambia: levels, causes and contributing factors.** *Bull World Health Organ.* 2000; **78**(5): 603–613.
[PubMed Abstract](#) | [Free Full Text](#)
126. Mahdi SS, Habib OS: **A study on preference and practices of women regarding place of delivery.** *East Mediterr Health J.* 2010; **16**(8): 874–878.
[PubMed Abstract](#) | [Publisher Full Text](#)
127. Killewo J, Anwar I, Bashir I, *et al.*: **Perceived delay in healthcare-seeking for episodes of serious illness and its implications for safe motherhood interventions in rural Bangladesh.** *J Health Popul Nutr.* 2006; **24**(4): 403–412.
[PubMed Abstract](#) | [Free Full Text](#)
128. Koenig MA, Jamil K, Streatfield PK, *et al.*: **Maternal health and care-seeking behavior in Bangladesh: findings from a national survey.** *Int Fam Plan Perspect.* 2007; **33**(2): 75–82.
[PubMed Abstract](#) | [Publisher Full Text](#)
129. Iyengar K, Iyengar SD, Suhalka V, *et al.*: **Pregnancy-related deaths in rural Rajasthan, India: exploring causes, context, and care-seeking through verbal autopsy.** *J Health Popul Nutr.* 2009; **27**(2): 293–302.
[PubMed Abstract](#) | [Publisher Full Text](#) | [Free Full Text](#)
130. Owais A, Sultana S, Stein AD, *et al.*: **Why do families of sick newborns accept hospital care? A community-based cohort study in Karachi, Pakistan.** *J Perinatol.* 2011; **31**(9): 586–592.
[PubMed Abstract](#) | [Publisher Full Text](#) | [Free Full Text](#)
131. Nabukera SK, Witte K, Muchunguzi C, *et al.*: **Use of postpartum health services in rural Uganda: knowledge, attitudes, and barriers.** *J Community Health.* 2006; **31**(2): 84–93.
[PubMed Abstract](#) | [Publisher Full Text](#)
132. Kambarami RA, Chirenje MZ, Rusakaniko S: **Antenatal care patterns and factors associated with perinatal outcome in two rural districts in Zimbabwe.** *Cent Afr J Med.* 1999; **45**(11): 294–299.
[PubMed Abstract](#) | [Publisher Full Text](#)
133. Moronkola OA, Omonu JB, Iyayi DA, *et al.*: **Perceived determinants of the utilization of maternal health-care services by rural women in Kogi State, Nigeria.** *Trop Doct.* 2007; **37**(2): 94–96.
[PubMed Abstract](#) | [Publisher Full Text](#)
134. Matera E, Mehari W, Mele A, *et al.*: **A community survey on maternal and child health services utilization in rural Ethiopia.** *Eur J Epidemiol.* 1993; **9**(5): 511–516.
[PubMed Abstract](#) | [Publisher Full Text](#)
135. Peltzer K, Mosala T, Shisana O, *et al.*: **Utilization of delivery services in the context of prevention of HIV from mother-to-child (PMTCT) in a rural**

- community, South Africa. *Curationis*. 2006; **29**(1): 54–61.
[PubMed Abstract](#) | [Publisher Full Text](#)
136. Moore BM, Alex-Hart BA, George IO: **Utilization of health care services by pregnant mothers during delivery: a community based study in Nigeria.** *East Afr J Public Health*. 2011; **8**(1): 49–51.
[PubMed Abstract](#)
137. Okwaraji YB, Cousens S, Berhane Y, *et al.*: **Effect of geographical access to health facilities on child mortality in rural Ethiopia: a community based cross sectional study.** *PLoS One*. 2012; **7**(3): e33564.
[PubMed Abstract](#) | [Publisher Full Text](#) | [Free Full Text](#)
138. Phoxay C, Okumura J, Nakamura Y, *et al.*: **Influence of women's knowledge on maternal health care utilization in southern Laos.** *Asia Pac J Public Health*. 2001; **13**(1): 13–19.
[PubMed Abstract](#) | [Publisher Full Text](#)
139. Faye A, Faye M, Bâ IO, *et al.*: **[Factors determining the place of delivery in women who attended at least one antenatal consultation in a health facility (Senegal)].** *Rev Epidemiol Sante Publique*. 2010; **58**(5): 323–329.
[PubMed Abstract](#) | [Publisher Full Text](#)
140. Mambu Nyangi Mondo T, Malengreau M, Kalambayi P, *et al.*: **[Delays in seeking and getting care, in seriously ill women of childbearing age in Kinshasa].** *Rev Epidemiol Sante Publique*. 2010; **58**(3): 189–196.
[PubMed Abstract](#) | [Publisher Full Text](#)
141. Myer L, Harrison A: **Why do women seek antenatal care late? Perspectives from rural South Africa.** *J Midwifery Womens Health*. 2003; **48**(4): 268–272.
[PubMed Abstract](#) | [Publisher Full Text](#)
142. Atuoye KN, Dixon J, Rishworth A, *et al.*: **Can she make it? Transportation barriers to accessing maternal and child health care services in rural Ghana.** *BMC Health Serv Res*. 2015; **15**: 333.
[PubMed Abstract](#) | [Publisher Full Text](#) | [Free Full Text](#)
143. Sarfraz M, Tariq S, Hamid S, *et al.*: **Social And Societal Barriers In Utilization Of Maternal Health Care Services In Rural Punjab, Pakistan.** *J Ayub Med Coll Abbottabad*. 2015; **27**(4): 843–9.
[PubMed Abstract](#)
144. Mrisho M, Obrist B, Schellenberg JA, *et al.*: **The use of antenatal and postnatal care: perspectives and experiences of women and health care providers in rural southern Tanzania.** *BMC Pregnancy Childbirth*. 2009; **9**: 10.
[PubMed Abstract](#) | [Publisher Full Text](#) | [Free Full Text](#)
145. Uyrwoth GP, Itsweng MD, Mpai S, *et al.*: **Obstetrics service utilisation by the community in Lebowa, northern Transvaal.** *East Afr Med J*. 1996; **73**(2): 91–94.
[PubMed Abstract](#)
146. Lama S, Krishna AK: **Barriers in Utilization of Maternal Health Care Services: Perceptions of Rural Women in Eastern Nepal.** *Kathmandu Univ Med J (KUMJ)*. 2014; **12**(48): 253–258.
[PubMed Abstract](#) | [Publisher Full Text](#)
147. Hunt LM, Glantz NM, Halperin DC: **Childbirth care-seeking behavior in Chiapas.** *Health Care Women Int*. 2002; **23**(1): 98–118.
[PubMed Abstract](#) | [Publisher Full Text](#)
148. MacLeod J, Rhode R: **Retrospective follow-up of maternal deaths and their associated risk factors in a rural district of Tanzania.** *Trop Med Int Health*. 1998; **3**(2): 130–137.
[PubMed Abstract](#) | [Publisher Full Text](#)
149. Iyun F: **An assessment of a rural health programme on child and maternal care: the Ogbomoso Community Health Care Programme (CHCP), Oyo State, Nigeria.** *Soc Sci Med*. 1989; **29**(8): 933–938.
[PubMed Abstract](#) | [Publisher Full Text](#)
150. Mbonye AK, Neema S, Magnussen P: **Malaria in pregnancy, risk perceptions and care seeking practices among adolescents in Mukono district Uganda.** *Int J Adolesc Med Health*. 2006; **18**(4): 561–573.
[PubMed Abstract](#) | [Publisher Full Text](#)
151. Foster J, Burgos R, Tejada C, *et al.*: **A community-based participatory research approach to explore community perceptions of the quality of maternal-newborn health services in the Dominican Republic.** *Midwifery*. 2010; **26**(5): 504–511.
[PubMed Abstract](#) | [Publisher Full Text](#) | [Free Full Text](#)
152. Yakong VN, Rush KL, Bassett-Smith J, *et al.*: **Women's experiences of seeking reproductive health care in rural Ghana: challenges for maternal health service utilization.** *J Adv Nurs*. 2010; **66**(11): 2431–2441.
[PubMed Abstract](#) | [Publisher Full Text](#)
153. Terra de Souza AC, Peterson KE, Andrade FM, *et al.*: **Circumstances of post-neonatal deaths in Ceara, Northeast Brazil: mothers' health care-seeking behaviors during their infants' fatal illness.** *Soc Sci Med*. 2000; **51**(11): 1675–1693.
[PubMed Abstract](#) | [Publisher Full Text](#)
154. Kongnyuy EJ, Hofman J, Mlava G, *et al.*: **Availability, utilisation and quality of basic and comprehensive emergency obstetric care services in Malawi.** *Matern Child Health J*. 2009; **13**(5): 687–694.
[PubMed Abstract](#) | [Publisher Full Text](#)
155. Mbonye AK: **Prevalence of childhood illnesses and care-seeking practices in rural Uganda.** *ScientificWorldJournal*. 2003; **3**: 721–730.
[PubMed Abstract](#) | [Publisher Full Text](#) | [Free Full Text](#)
156. Knight HE, Self A, Kennedy SH: **Why are women dying when they reach hospital on time? A systematic review of the 'third delay'.** *PLoS One*. 2013; **8**(5): e63846.
[PubMed Abstract](#) | [Publisher Full Text](#) | [Free Full Text](#)
157. Mangham-Jefferies L, Pitt C, Cousens S, *et al.*: **Cost-effectiveness of strategies to improve the utilization and provision of maternal and newborn health care in low-income and lower-middle-income countries: a systematic review.** *BMC Pregnancy Childbirth*. 2014; **14**: 243.
[PubMed Abstract](#) | [Publisher Full Text](#) | [Free Full Text](#)

Open Peer Review

Current Referee Status:  

Version 1

Referee Report 23 April 2019

<https://doi.org/10.5256/f1000research.19492.r44643>



Alfonso Rosales 

World Vision US, Washinton, DC, USA

This systematic review of maternal and newborn care-seeking practices adds important information regarding maternal and newborn care seeking patterns and associated barriers.

With its methodology clear and sound, results provide important findings to support future health program design in service provision for mothers and newborn.

One important aspect not clearly addressed, in the results and discussion section, is related to the difference or lack of thereof between maternal and newborn care-seeking pathway. There seems to be published evidence on this subject, which seems to lead on the different care-seeking pathways, with consequences in future program design. Authors, may want to include a special issue on this theme published at the Journal of Health, Population and nutrition in December of 2017.

The conclusion, seems to be rather short and not conclusive enough for relevant findings. It leaves out important common factors such as the need to include community/user context for strategy/intervention design, for example.

Are the rationale for, and objectives of, the Systematic Review clearly stated?

Yes

Are sufficient details of the methods and analysis provided to allow replication by others?

Yes

Is the statistical analysis and its interpretation appropriate?

Yes

Are the conclusions drawn adequately supported by the results presented in the review?

Partly

Competing Interests: No competing interests were disclosed.

I have read this submission. I believe that I have an appropriate level of expertise to confirm that it is of an acceptable scientific standard.

Referee Report 25 March 2019

<https://doi.org/10.5256/f1000research.19492.r45478>



Aastha Kant

Harvard Global Research Support Centre India (HGI), Mumbai, Maharashtra, India

The present article is a systematic review of qualitative and observational research studies on care seeking for maternal and newborn illness in low and middle income countries. There has been a knowledge gap in synthesizing studies to understand barriers and facilitators in the context of the Three Delay Model and pathways of care seeking.

The literature search has been conducted in a robust manner. The authors could expand a little more on 'narrative synthesis' of the findings in the context of qualitative and observational studies.

The authors have included literature search up to September 2017. A special issue of the Journal of Health, Population and Nutrition (December 2017), focuses on illness recognition and care seeking pathways of maternal and newborn illness in seven countries. The authors might like to update the search to include more recent articles.

The authors have synthesized the findings of the studies, combining maternal and newborn illness. They may want to present the care seeking pathways for maternal and newborn illness independently to explore the effect of the timing of the onset of illness (during pregnancy, childbirth or post childbirth for maternal illness, for instance) on care seeking behavior. This will also allow the authors to explore how the different perceptions of the causes of illness- supernatural or medical - often influence care seeking pathways.

Overall, this is a very relevant work that can add to the body of knowledge in the context of maternal and newborn health.

Are the rationale for, and objectives of, the Systematic Review clearly stated?

Yes

Are sufficient details of the methods and analysis provided to allow replication by others?

Yes

Is the statistical analysis and its interpretation appropriate?

Not applicable

Are the conclusions drawn adequately supported by the results presented in the review?

Yes

Competing Interests: No competing interests were disclosed.

Reviewer Expertise: Qualitative research methodology, reproductive, maternal, newborn and child health

I have read this submission. I believe that I have an appropriate level of expertise to confirm that it is of an acceptable scientific standard.

The benefits of publishing with F1000Research:

- Your article is published within days, with no editorial bias
- You can publish traditional articles, null/negative results, case reports, data notes and more
- The peer review process is transparent and collaborative
- Your article is indexed in PubMed after passing peer review
- Dedicated customer support at every stage

For pre-submission enquiries, contact research@f1000.com

F1000Research